

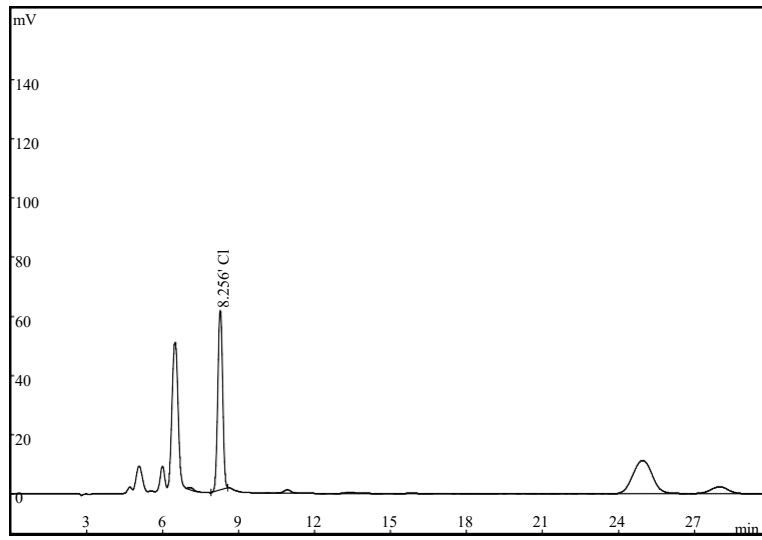
## 1.2 Determination of anions in sulfolane



Sulfolane (also known as Tetrahydrothiophene sulfone) has stable chemical properties, and generally does not polymerize or decompose under acid and alkali conditions. Therefore, sulfolane is used as an ideal solvent for aromatics extraction. But in the process of industrial application, sulfolane will continue to deteriorate. The reason of degradation is not very clear, but the detection of its anion content can help to find out it.

### **Analysis Conditions:**

- Analytical Column: SH-G-1+SH-AC-11
- Mobile Phase: 10 mM KOH
- Flow Rate: 1.0 mL/min
- Suppressor: SHY-A-6
- Injection Volume: 25  $\mu$ L



Chromatogram of anions in sulfolane