

**ic<sup>+</sup>**



**CIC-D260**  
Dual-Channel  
Ion Chromatograph



---

Qingdao Shenghan Chromatograph Technology Co., Ltd.  
Add: No.151, Zhuzhou Road, Laoshan District, Qingdao, Shandong, China  
Tel: 086 (0)53268069317  
E-mail: [inquiry@qdsrd.com](mailto:inquiry@qdsrd.com)  
Web: <https://en.sheng-han.com/>

**SHINE**



# Intelligent Assistant Reliable Partner

## Excellent performance and excellent quality stem from the integrity and strength of the SHINE'S brand.

CIC-D260 is a third-generation dual-channel ion chromatograph developed by SHINE. The product adopts HDI intelligent technology and is equipped with 100% self-developed core components. While improving detection efficiency, it can also provide users with an unprecedented operating experience.

Whether you are engaged in environmental monitoring, food analysis, chemical production or Drug development and quality analysis, CIC-D260 can meet your practical needs with excellent performance and reliable stability:

- Dual-channel design, allows for simultaneous detection of anions and cations;
- The compact exterior design can improve the space utilization rate of the laboratory;
- The newly designed bipolar pulse detector directly expands the ppb-ppm concentration range signal without the need to adjust the range;
- Intelligent alarm system. Leakage alarm, residual eluent alarm, low pressure alarm and high pressure alarm;
- Real time monitoring of consumables usage, with clear status at a glance;
- The gas-liquid separator can effectively eliminate the impact of bubbles on the system;
- Wider usage scenarios, in addition to traditional CD detectors, can also be combined with detectors such as ECD, UV, DAD, ICP-OES, AFS, MS, etc. The scenario is beyond your imagination.





ShineLab

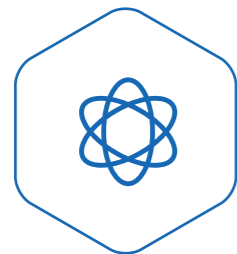
## Improve your laboratory efficiency Shinelab chromatography workstation

Combining the dual-channel ion chromatography system with the chromatography workstation further improves efficiency, throughput, and liberates productivity. ShineLab is based on intelligent algorithms and can simulate the separation effects of different types of IC columns under different chromatographic conditions, helping users optimize chromatographic conditions and select IC columns.



Compliance · Security

Audit tracking, permission management, electronic signature, data backup and restore functions that meet regulatory requirements such as cGMP, CFDA, and ICH, ensuring data integrity and traceability, and improving regulatory compliance.



Intelligence · Accuracy

Intelligent baseline correction effectively eliminates baseline drift during gradient elution, reduces the difficulty of trace sample detection, and makes chromatographic peak determination more accurate.



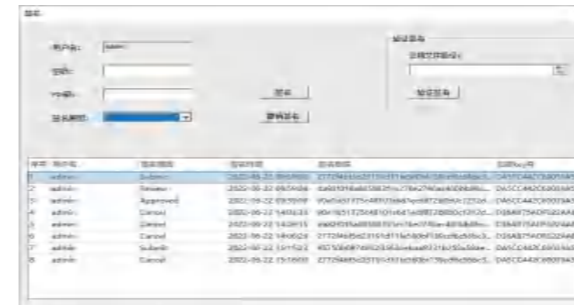
Efficient · Stable

Using ShineLab, quickly and accurately establish methods and sequence settings, intelligent information processing tools, and achieve fast data processing, viewing, and report generation.

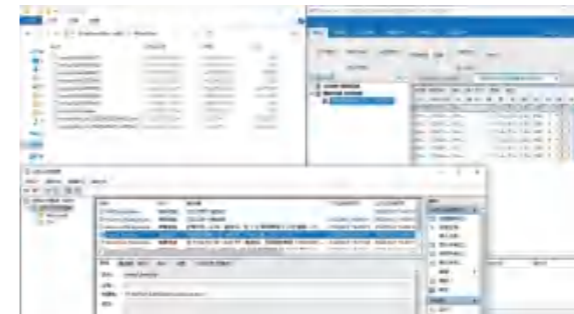


ShineLab

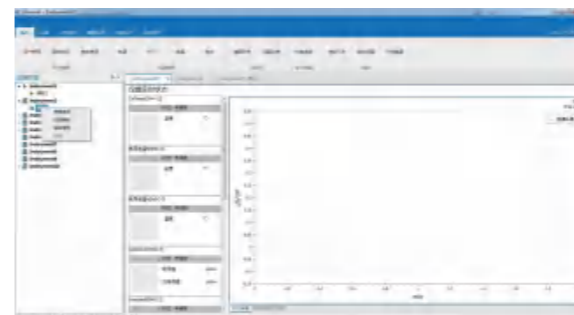
Electronic signatures :Ensuring that both electronic and handwritten signatures have equal legal effect. Signature locking and electronic signature comply with domestic GMP/international 21 CFR Part 11 and other regulatory requirements.



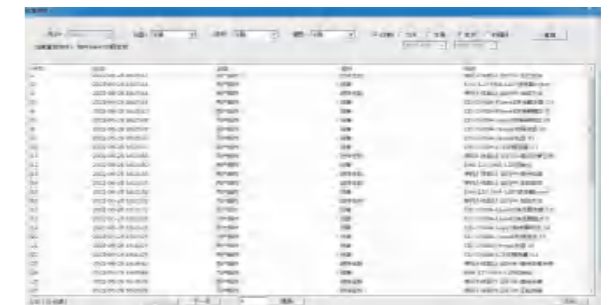
Data backup: ShineLab software has electronic data full backup and incremental backup functions to ensure the integrity and security of inspection data required for quality control.



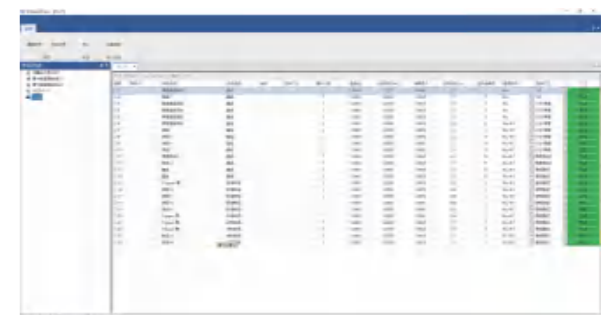
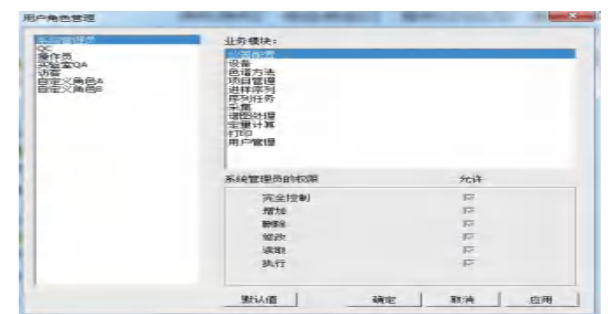
Sequence archiving: Provide customers with the sequence archiving they need, complete copies of records, and prevent various data vulnerabilities.



Audit Trail: Unique audit trail function for easy audit trail inspection. Equipped with comprehensive audit tracking function, complete data records, real-time display of user login, logout, user change records, running modules, event descriptions, and viewing of system operation at any time.



Permission management: multi-level permission management, in compliance with user



# Advantage

## 100% self-developed core components

The core components are independently designed and developed by SHINE, ensuring quality and delivery time.



## High pressure chromatography pump

The series double plunger pump developed by SHINE adopts PEEK material, with a maximum pressure resistance of 42MPa and a maximum flow rate of 10ml/min, and a pressure fluctuation of less



## New bipolar pulse conductivity detector

The detection is more stable and can directly expand the ppb-ppm concentration range



## High pressure injection valve

There are only three instrument companies globally capable of producing high-pressure injection valves. SHINE's injection valve has a lifespan of over 100000 times.



## CLICK injection mode

Abandon the syringe and click the button to complete the injection, even manual injection can be so easy.



## ANN warning system

The "conversable" ion chromatograph can provide timely feedback to the operating personnel for abnormal situations such as insufficient mobile phase, overpressure, low pressure, and leakage.



## consumable monitoring function

Key consumable components such as IC column and suppressor have monitoring function, which can record the use times and cycles of products in real time and provide users with Preventive maintenance function;



SHA-18 is an autosampler with multiple injection methods and designed for dual-channel instruments. The sample cover protects the sample from external environmental pollution. It is an efficient, multi solvent needle washing program that completely eliminates sample residues and has unparalleled reproducibility.

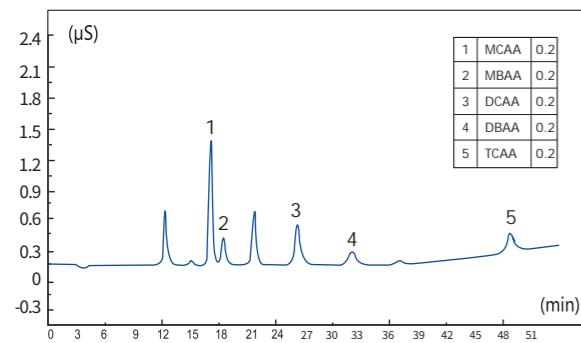


The eluent generator is the core technology of a new generation of reagent free ion chromatograph. This instrument achieves the function of generating the required concentration of eluent online by simply introducing pure water, eliminating time-consuming operations such as manual preparation of eluent, greatly improving the automation of analysis, and avoiding testing errors caused by human factors. At the same time, the intelligent control method can achieve customized settings for the concentration of the eluent, and can achieve gradient elution and separation operations for complex samples that were previously impossible to complete with an isocratic pump, further improving the accuracy of analysis.

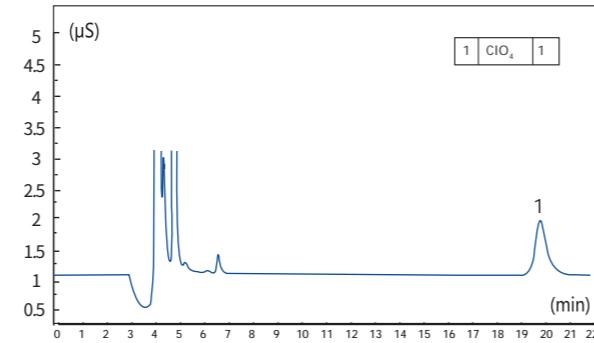
# Application

## Industry Solutions

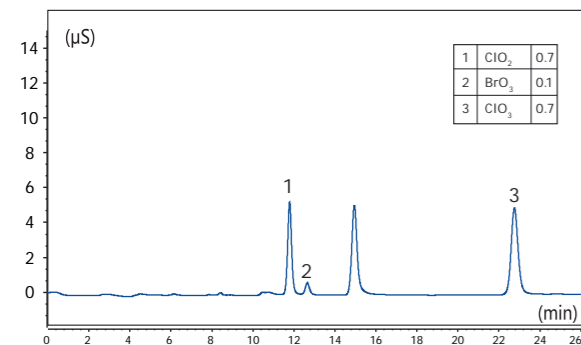
Detection of 5 haloacetic acid indicators in drinking water



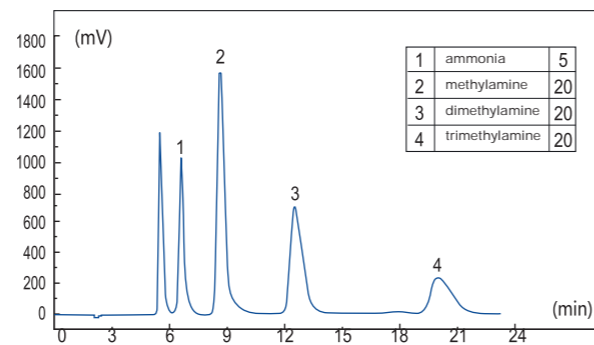
Detection of perchlorate in drinking water



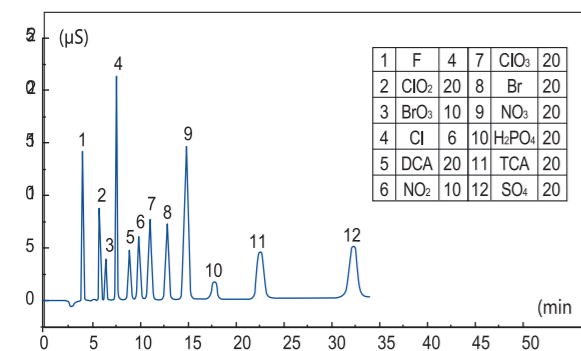
Detection of 3 disinfection by-products in drinking water



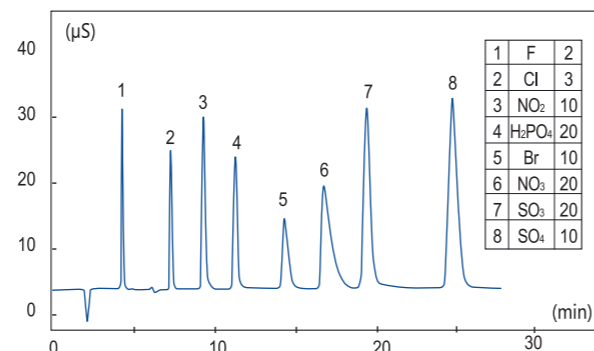
Determination of ammonia, methylamine, dimethylamine and trimethylamine in ambient air



Determination of Chlorate, Chlorite, Bromate, Dichloroacetic acid and Trichloroacetic acid in water quality



Determination of inorganic anions in water quality



## CHINESE SCIENTIFIC INSTRUMENTS SERVING THE WORLD

Since 2009, we have exported to **72** countries, including 22 countries in Asia, 26 countries in Europe, 10 countries in America, 10 countries in Africa and 2 countries in Oceania.

