

GMP Washer



GMP Washer

Application

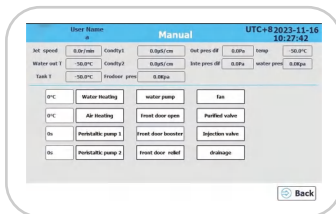
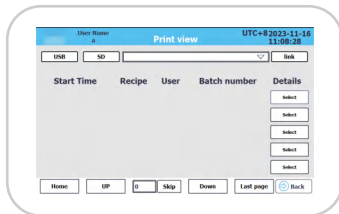
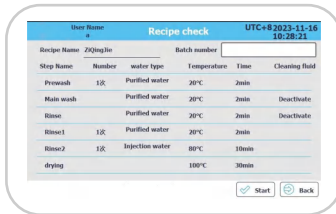
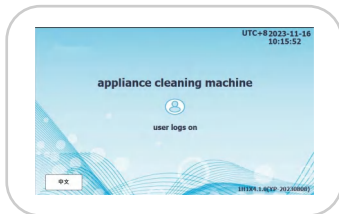
Our GMP washer is designed strictly in accordance with GMP standards, which provides a traceable cleaning process and standardized cleaning solution. It made with pharmaceutical-grade materials, ensuring a safer and cleaner production process.

It is mainly used for cleaning key components, such as fermentation tanks, large balloon bottles, large glass products, filling and packaging machine parts, mixers, funnels, pallets, boxes, table-ting tools and other items for the production of medicines, diagnostics, cosmetics and food.

Advantage

1. Siemens PLC control system with full color LCD touch screen

- Built-in multiple cleaning programs and customizable programs, capable of programming process cycles according to user requirements.
- Preventive maintenance and identification and resolution of faults, equipped with a built-in service diagnostic program, capable of systematically verifying and rechecking the operation of components.
- Reserve ERP/MES communication interface (LAN cable) to connect with the SCADA system, providing free communication protocols, IP addresses, point tables, and corresponding technical support to complete the SCADA data acquisition tasks,



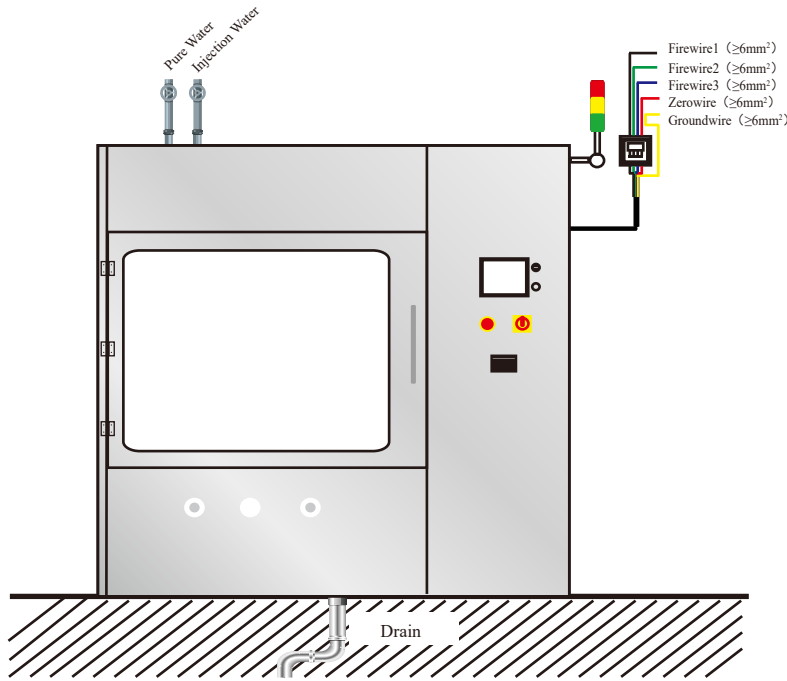
2. Advanced cleaning system

- Highly efficient and energy-saving circulating water pump:
 - Made of AISI316L.
 - Casing and impeller undergo a polished treatment to achieve a smoothness of $Ra \leq 0.6 \mu m$, effectively eliminating residual chemical substances.
 - Equipped with a variable frequency startup control to prevent any impact on vessels and appliances during the pump's startup moment.

GMP Washer

GMP Washer

- The multi-channel chemical cleaning peristaltic pump can automatically distribute cleaning agents into the chambers according to programmed requirements. It is equipped with a low liquid level sensor to monitor for any liquid shortage.
- The cleaning basket rack is supplied with water using a single or dual water supply method. After each cycle, the water in the drainage pipeline is discharged.
- The circulation pipeline is equipped with a pressure monitoring system, and the screen displays the real-time water pressure of the cleaning spray. When the cleaning water pressure is abnormal, the operation of the circulation pump is temporarily paused.
- The spray arm speed sensor monitors the real-time rotation status of the spray arm. When the spray arm rotation is abnormal, the operation of the circulation pump is temporarily paused.
- The inner tank of the water tank is equipped with low liquid level and high liquid level alarm devices to ensure the supply of cleaning water.



3.Advanced drying system ensures thorough drying.

- Compressed air drying system, where dry air is injected into the vessel's interior through an injection-type cleaning basket rack.
- Equipped with AAF H14 air inlet HEPA filter.

4.Safety protection system, fully ensuring the safety of operators.

- The door's sealing is achieved through compression, and the sealing effect can be ensured by monitoring the door's sealing gasket in real-time. This real-time monitoring can improve the sealing effectiveness of the door, preventing the leakage or entry of gases, liquids, dust, and other substances.
- Water overheating protection, hot air heating overheating protection, water pump overheating protection, fan overheating protection, etc.
- Coarse filtration system, water tank filtration system, circulation pump, drainage pump pipeline filtration protection, etc.
- Audible and visual alarm: Operation status indicator lights, located on the top of the machine, display the machine's operating status in real-time through green, yellow, and red colors. Alarms should be issued for equipment abnormalities and deviations. Automatic sound alarms can be implemented. Alarm information, including alarm codes, alarm time, and alarm release time, can be displayed on the screen.



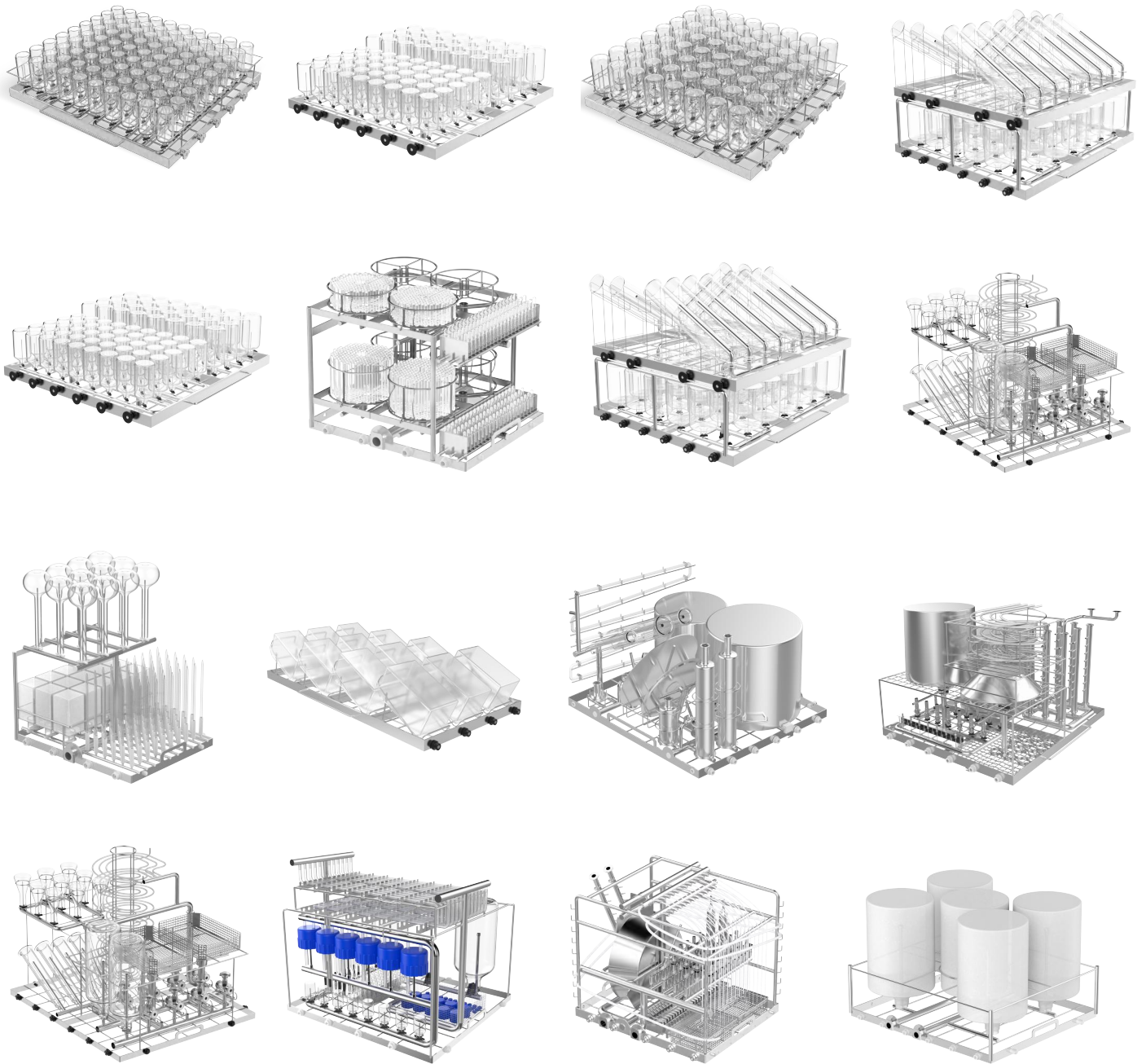
Specification

Model	GMP-600	GMP-1200	GMP-1600
Capacity(L)	688	1210	1690
Control system	Siemens S7-1200		
Display	7 inch LCD Touch screen		
Standard Program	20		
Permission management system	Four level		
Storage	USB port		
Printer	Build in Printer		
Cleaning System	Cleaning Temp Range	RT to 93 C	
	Cleaning method	Spray cleaning	
	Cleaning Agent Addition Channel	Double channel	
	Cleaning Agent Storage Capacity	5L*2units	
	Advanced Function	Audit tracking	
		Spray arm speed sensor,	
		Pipeline pressure monitoring	
		Circulating pump variable frequency startup	
Drying System	Drying Mode	Hot air injection via sprinkler by compressor fan	
	Drying Time Range	15 to 30 mins	
	Drying Temp Range	RT to 120 C	
	Air volume	270M3/H	345M3/H
Water inlet pipe	Quantity	2 units	
	Material	304 stainless steel	
Water Pump	Brand	World-renowned brand	
	Flow Rate	≥1000L/min	
Structure	Material	AISI316L stainless steel	
	Door	Double-layered, hollow-tempered glass side-opening door with a stainless steel frame	
Power Supply	380V,50/60Hz		
Consumption	22kW	26kW	
Internal Size(W×D×H)(mm)	830x830x1000	1100x1100x1000	1300x1300x1000
External Size(W×D×H)(mm)	1540x950x1990	1825x1220x1990	2050x1420x1990
Shipping Size(W×D×H)(mm)	1700x1250x2240	2100x1550x2240	2350x1700x2240
N.W./G.W. (kg)	650/730	800/900	950/1070

Customized Cleaning Racks



Customized Cleaning Racks



Quantity of cleaning				
Types of cleaning	External size(mm)	GMP-600(pcs)	GMP-1200(pcs)	GMP-1600(pcs)
1L Blue cap bottle	H:225 Φ:100	80	126	178
10L Blue cap bottle	H:415 Φ:230	9	16	20
20L Blue cap bottle	H:510 Φ:300	4	9	12
10L Big standing bottle	H:435 Φ:230	9	16	20
15L Big standing bottle	H:535 Φ:240	6	12	20
20L Big standing bottle	H:510 Φ:300	4	9	12

Note: Our cleaning racks can be customized according to your cleaning needs.